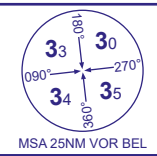


INSTRUMENT APPROACH CHART - ICAO

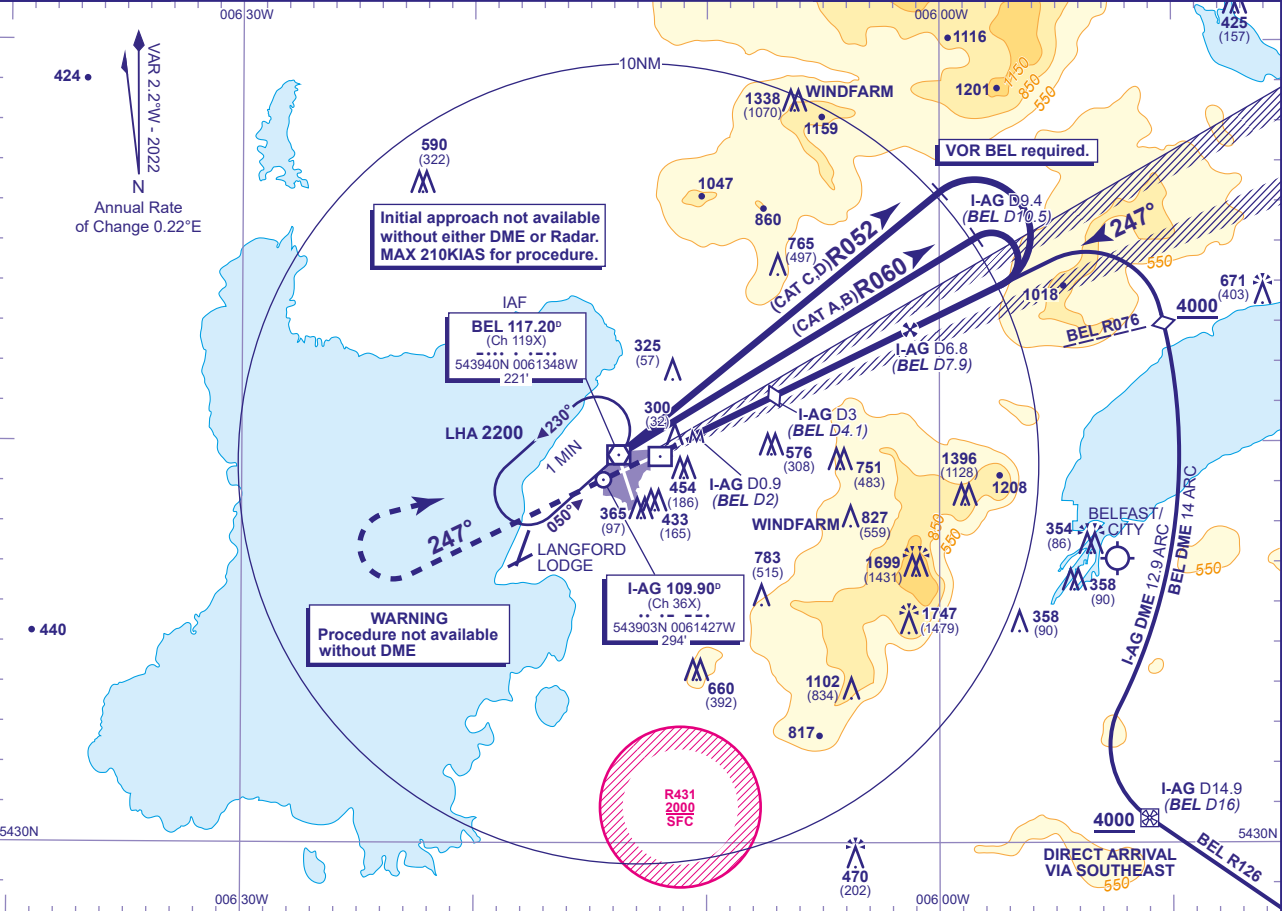
BELFAST ALDERGROVE

LOC/DME
RWY 25
(ACFT CAT A,B,C,D)



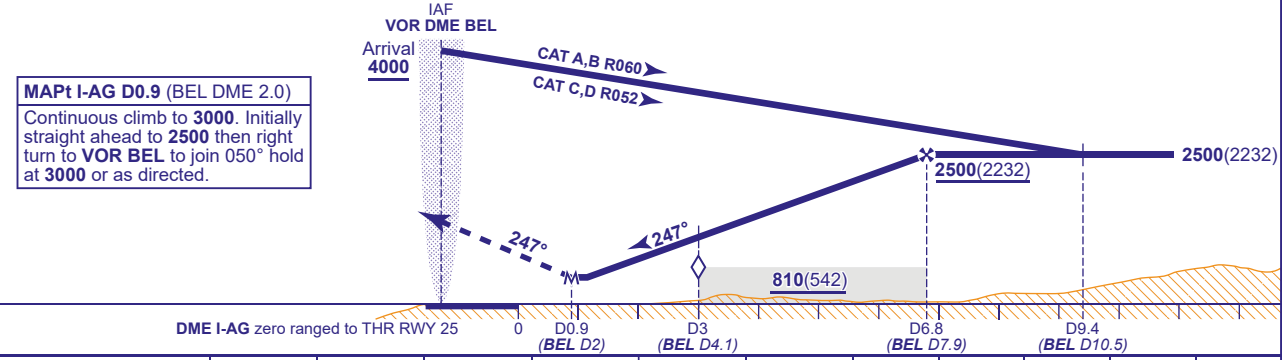
APP	133.125	ALDERGROVE APPROACH	AD ELEVATION	268
TWR	118.300	ALDERGROVE TOWER	THR ELEVATION	268
RAD	120.905	ALDERGROVE DIRECTOR	OBSTACLE ELEVATION	1747 AMSL (1479) (ABOVE THR)
ATIS	126.130	ALDERGROVE INFORMATION	BEARINGS ARE MAGNETIC	

TRANSITION ALTITUDE
6000



RECOMMENDED PROFILE Gradient 5.2%, 320FT/NM

DME I-AG (BEL)	6(7.1)	5(6.1)	4(5.1)	3(4.1)	2(3.1)
ALT(HGT)	2230(1962)	1910(1642)	1590(1322)	1280(1012)	960(692)



Aircraft Category		A	B	C	D	Rate of descent	G/S KT	160	140	120	100	80
OCA (OCH)	Procedure	680(412)	680(412)	680(412)	680(412)		FT/MIN	850	740	640	530	420
VM(C)OCA (OCH AAL)	Total Area	750(482)	840(572)	1180(912)	1290(1022)							

NOTE Aircraft will normally be required to hold not lower than 3000 at VOR BEL.

CHANGE (5/25): NW MSA INCREASE. NO DME PROCEDURE WITHDRAWN. SDF MOC(A). WARNING ADDED.